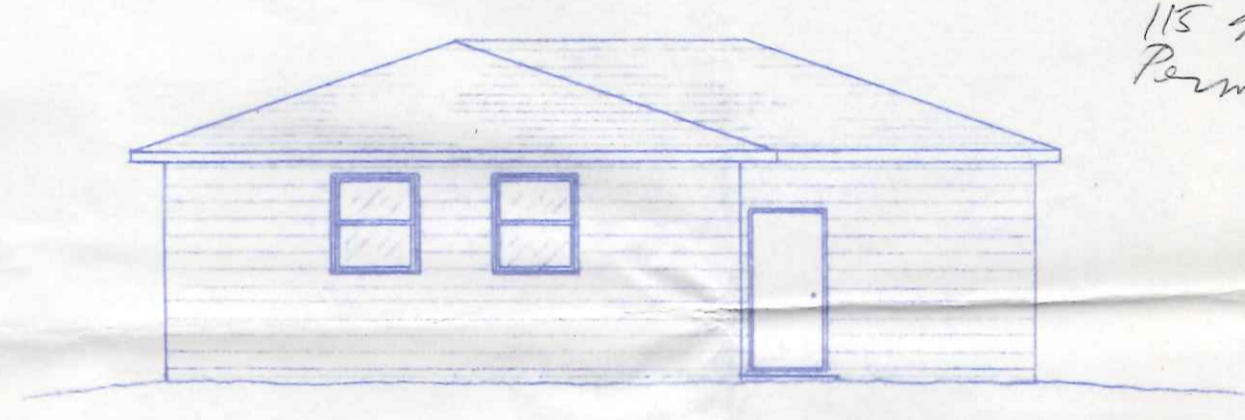
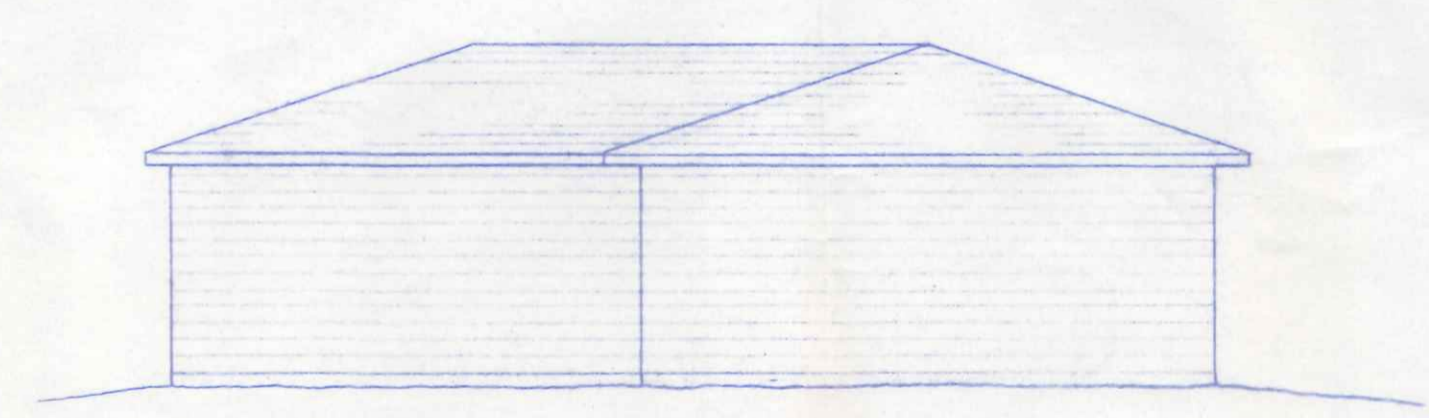


FRONT ELEVATION
1/4" = 1'-0"

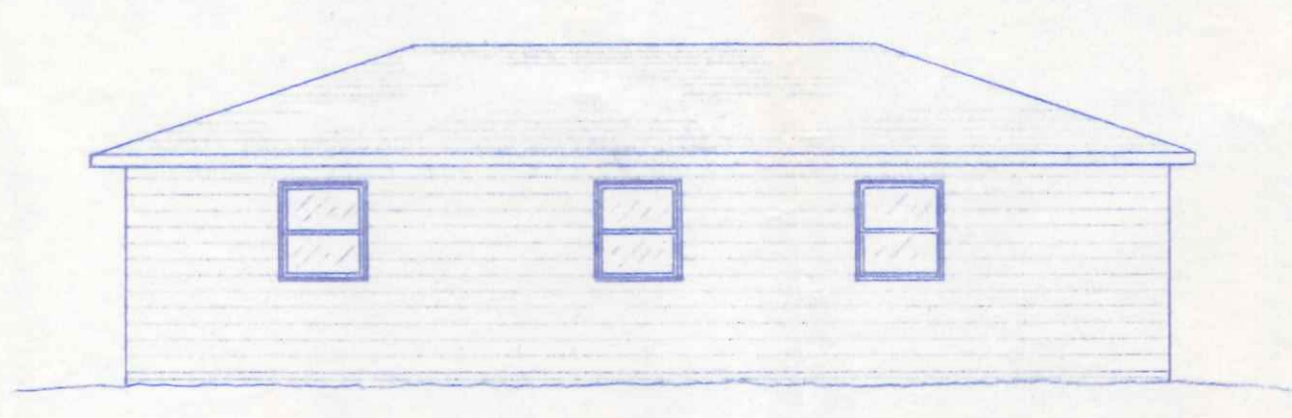
CITY OF NAPOLEON
BUILDING DEPT.
Plan Approval
By *[Signature]* Date *1/13/84*
115 North Crest Circle
Permit 857



REAR ELEVATION
1/8" = 1'-0"

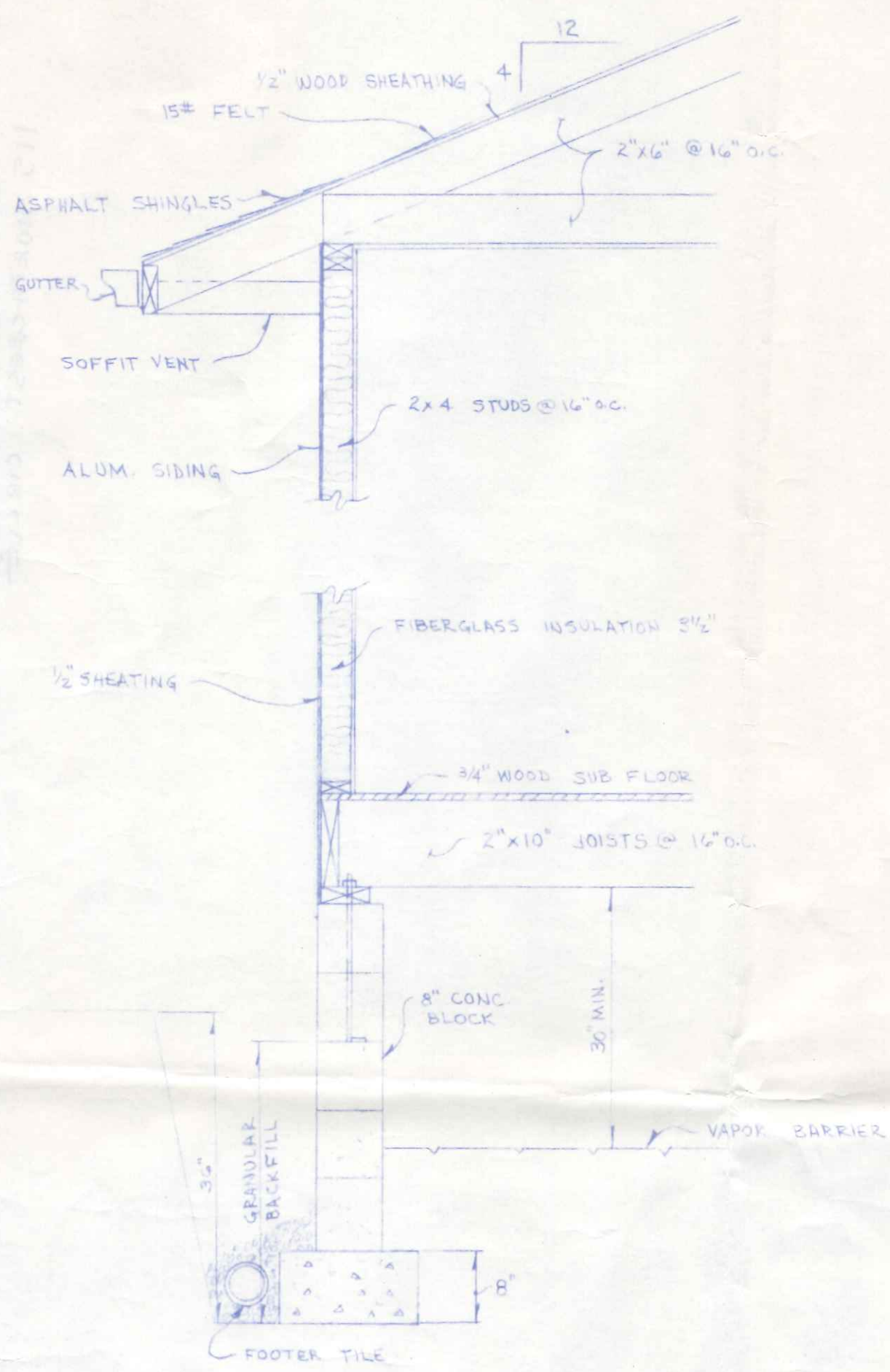


LEFT SIDE ELEVATION
1/8" = 1'-0"

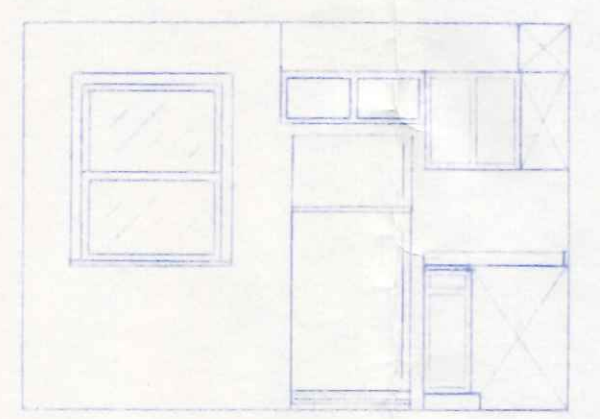
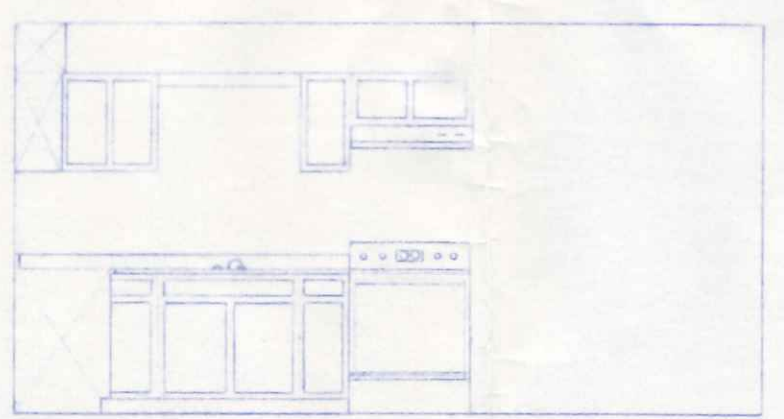


RIGHT SIDE ELEVATION
1/8" = 1'-0"

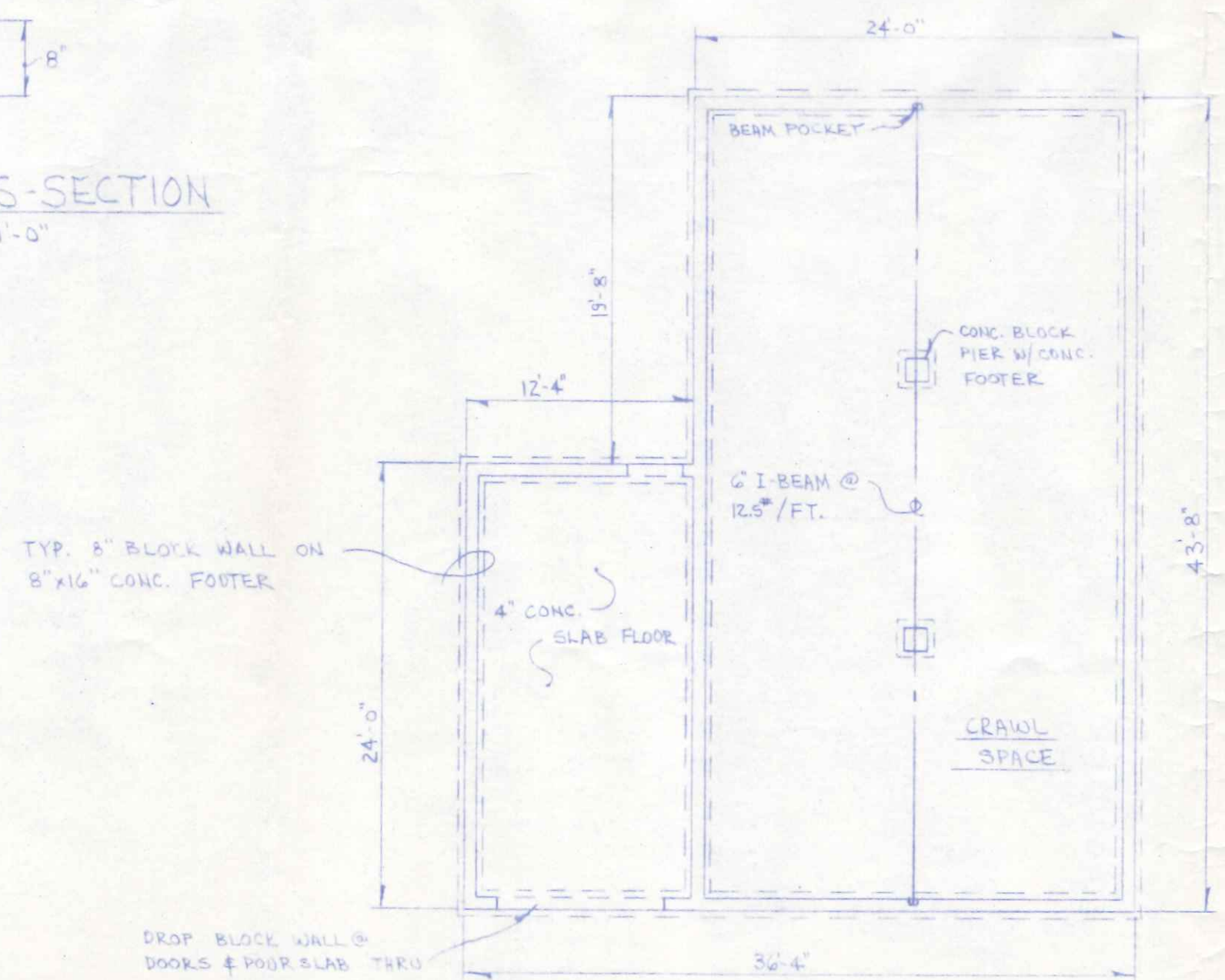
BECK CONSTRUCTION CO.		
DRAWN BY: RBS	PLAN NO. 202	1344 SQ. FT.
CHECKED:		FEB 1984



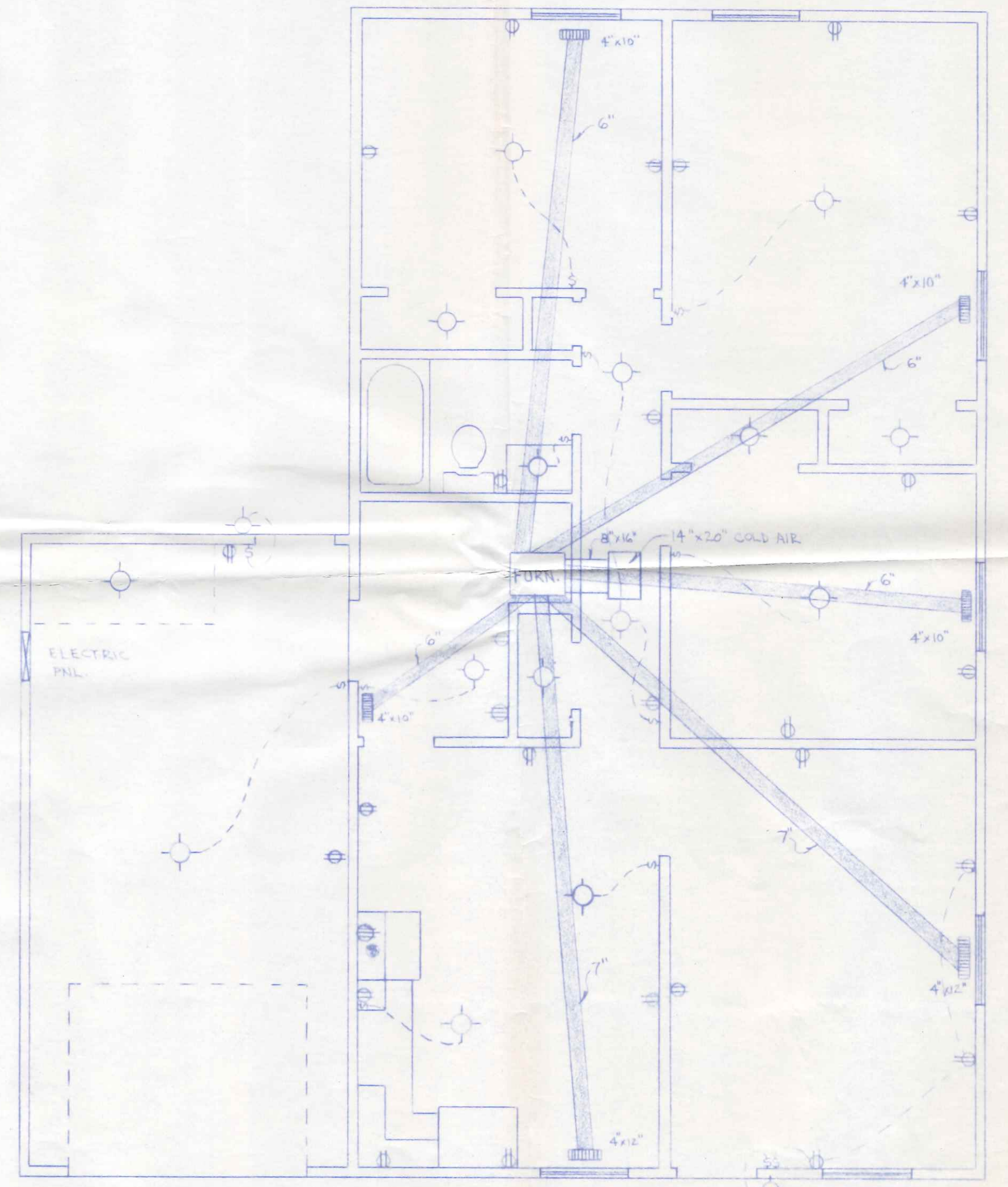
TYPICAL CROSS-SECTION
3/4" = 1'-0"



KITCHEN DETAILS
1/4" = 1'-0"



FOUNDATION PLAN
1/8" = 1'-0"



HEATING & ELECTRICAL PLAN
1/4" = 1'-0"